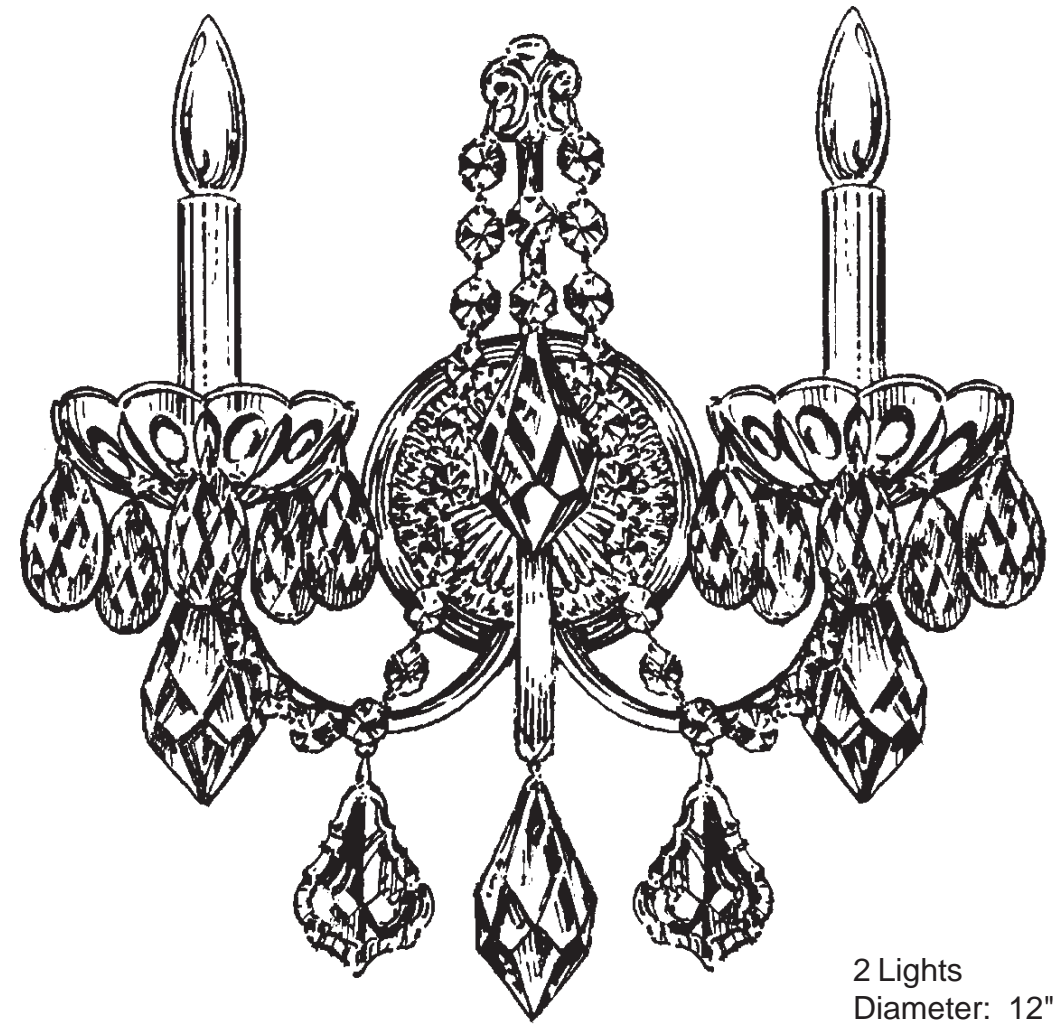




**SCHONBEK®**

CENTURY 1702- \_ \_ \_



2 Lights  
Diameter: 12"  
Body Length: 14"  
Extension: 5-1/2"  
Hanging Weight: 4 lbs.

**T**HIS DESIGN IS THE PROPRIETARY  
TRADE DRESS/TRADemark OF  
SWAROVSKI LIGHTING, LTD.

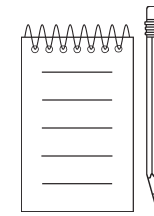
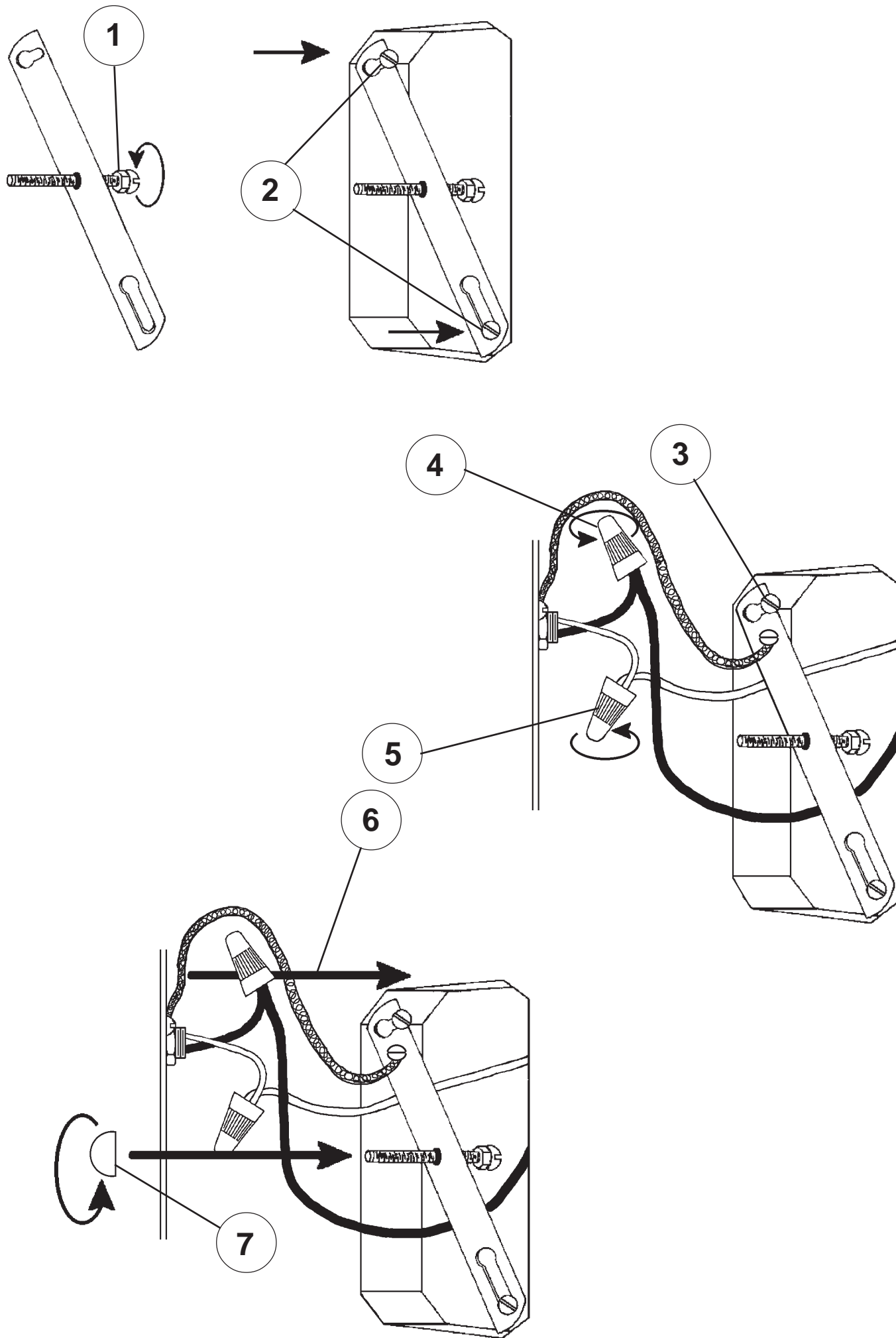


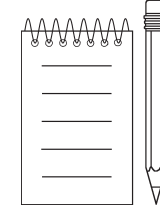
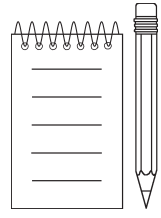
**SCHONBEK®**

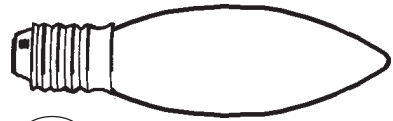
MAX 60 W		110-120 V					

SCHONBEK® is a member of the Swarovski group.

All electrical components must be installed by a licensed electrician in accordance with the National Electric Code and the appropriate local electrical codes.







8

You will need 2 - B10  
25 Watts Recommended  
60 Watts Max

Install bulb and be sure  
to test fixture **BEFORE**  
trimming.

9763/1 = Gold Pins  
9763/2 = Silver Pins

