



SCHONBEK®

NEW ORLEANS 3651- __ __TK



2 Lights
Diameter: 12"
Body Length: 14-1/2"
Extension: 5-1/2"
Hanging Weight: 3lbs.

THIS DESIGN IS THE PROPRIETARY TRADE DRESS/TRADemark OF SWAROVSKI LIGHTING, LTD.

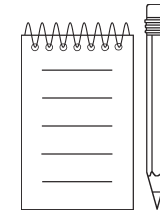
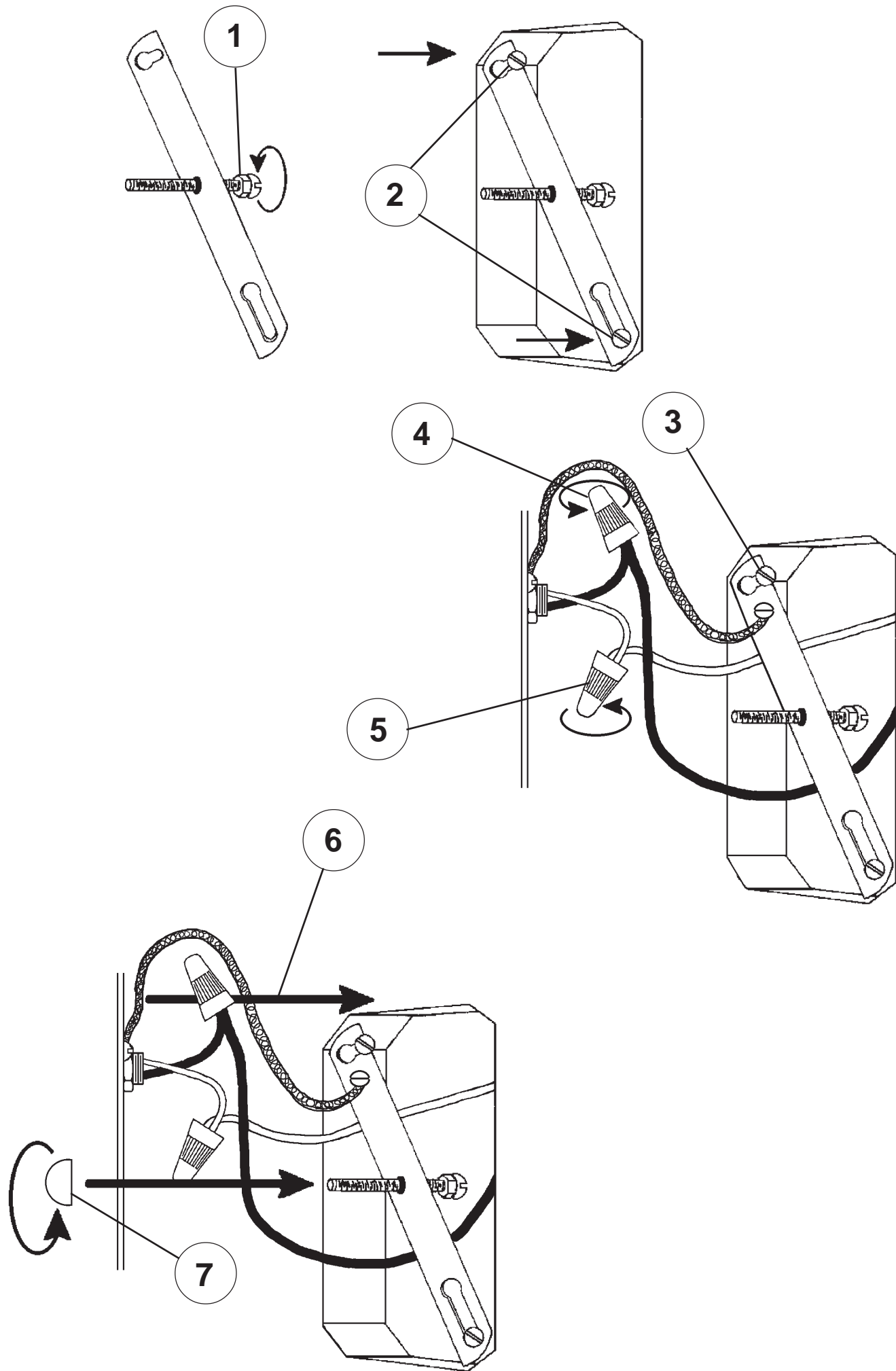


SCHONBEK®

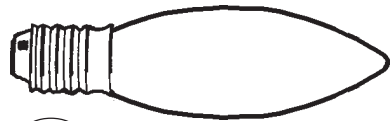
| | | | | | | | |
|----------|--|-----------|--|--|--|--|--|
| | | | | | | | |
| MAX 60 W | | 110-120 V | | | | | |

SCHONBEK® is a member of the Swarovski group.

All electrical components must be installed by a licensed electrician in accordance with the National Electric Code and the appropriate local electrical codes.







8

You will need 2 - B10
25 Watts Recommended
60 Watts Max

Install bulb and be sure
to test fixture **BEFORE**
trimming.

